

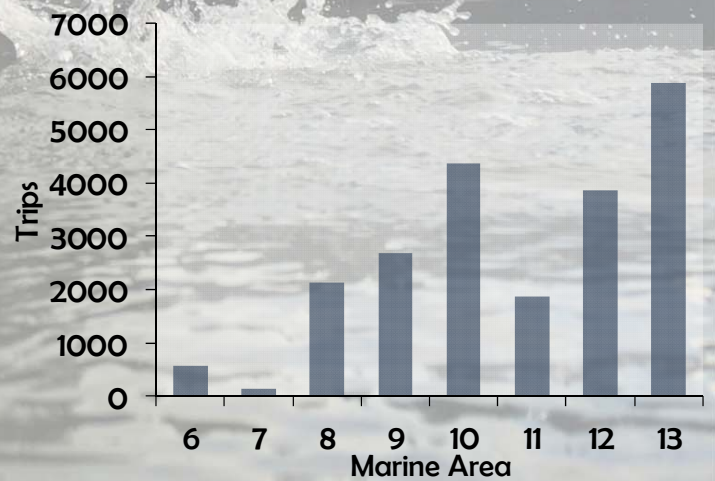
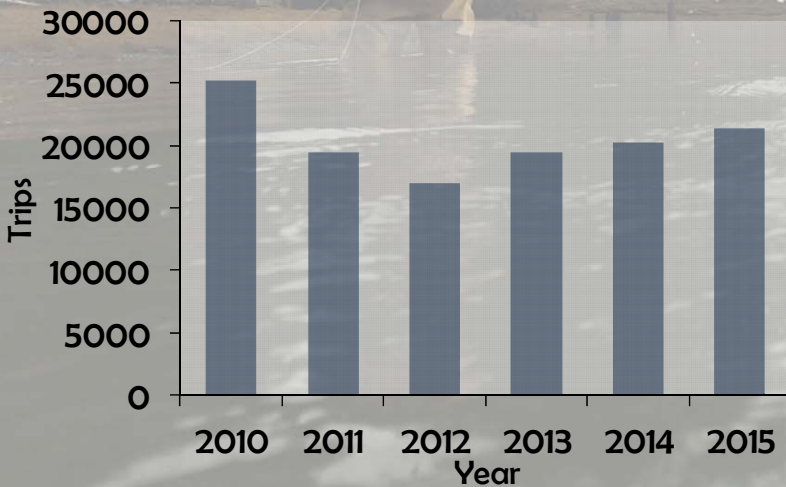
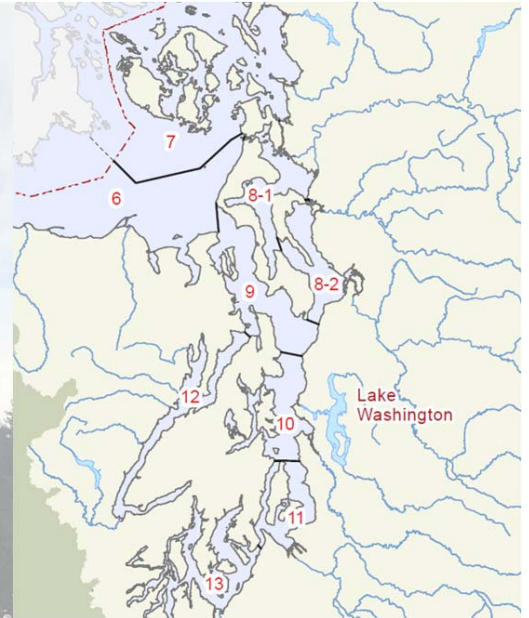
# Value of catch-and-release fishing for Puget Sound Coastal Cutthroat Trout

Open year-round in marine waters

20,000 angler trips

- primarily shore-based
- late winter/spring peak season
- represents 5% of salmon trips

\$1.1 million economic value



Fishing video: <https://youtu.be/3gnrc8sZ2wo>



Washington  
Department of  
**FISH and  
WILDLIFE**

Prepared by: Ryan Lothrop, Puget Sound Recreational Fishery Enhancement Fund Coordinator

\*RecFIN Survey 2010-15.

\*TCW Economics. 2008. *Economic Analysis of Non-Treaty Commercial and Recreational Fishing in WA State.*

Photo: L. Lothrop

